



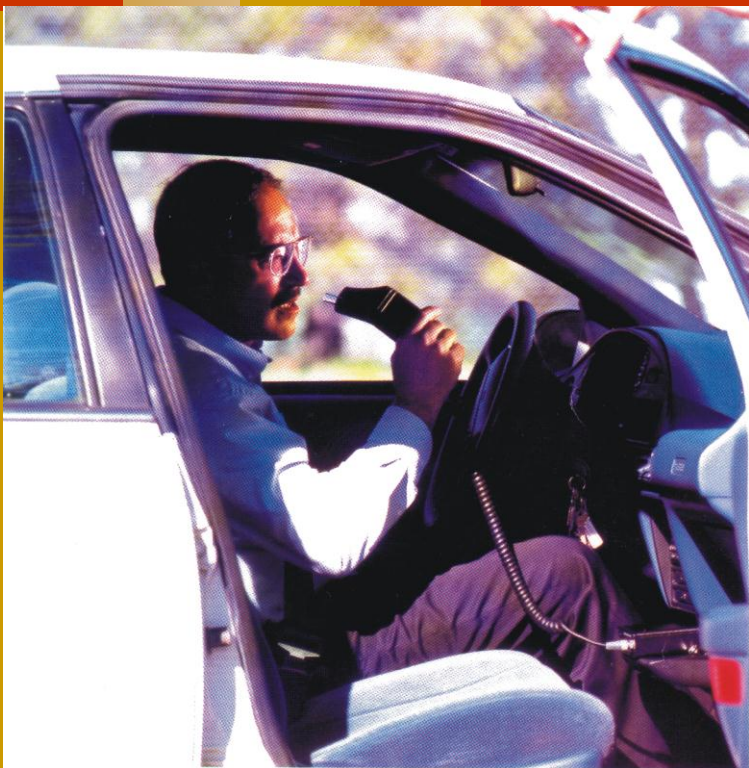
ROAD SAFETY
RESEARCH, POLICING AND EDUCATION
CONFERENCE 2013



Five Levels of Interlock Program Monitoring

Robert Voas, Tara Kelley-Baker,
and Eileen Taylor

Pacific Institute for Research and
Evaluation

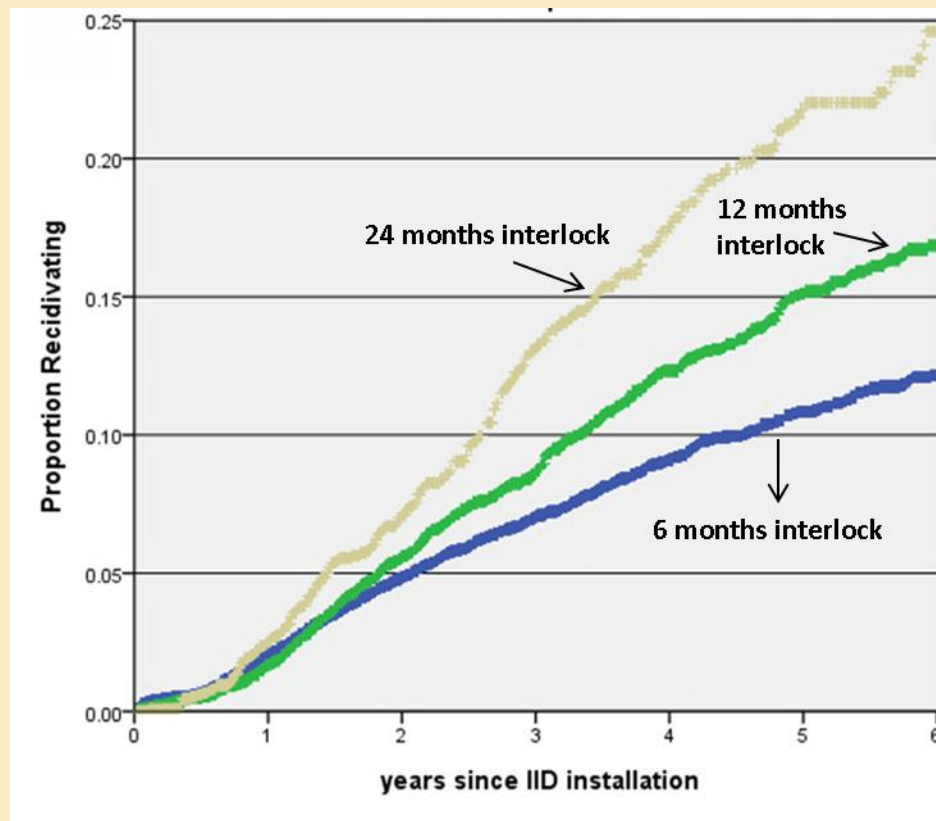




Opportunities for Increasing Interlock Effectiveness

- Extending the current recidivism reduction while interlock is on the vehicle.
- Extend the time on the interlock.
- Extent the impact of the interlock beyond removal.
- *Monitoring can be aimed at all of these.*

Interlock Users Return to their Pre-program Drinking and Driving Levels





Issues in Interlock Monitoring Programs

- How intensive should the monitoring be?
- To what extent should special penalties be assessed for poor interlock performance?
- To what extent should interlock data be used for educational/treatment programs?
- How much of the management should be assigned to the interlock provider?



Monitoring Interlock Programs

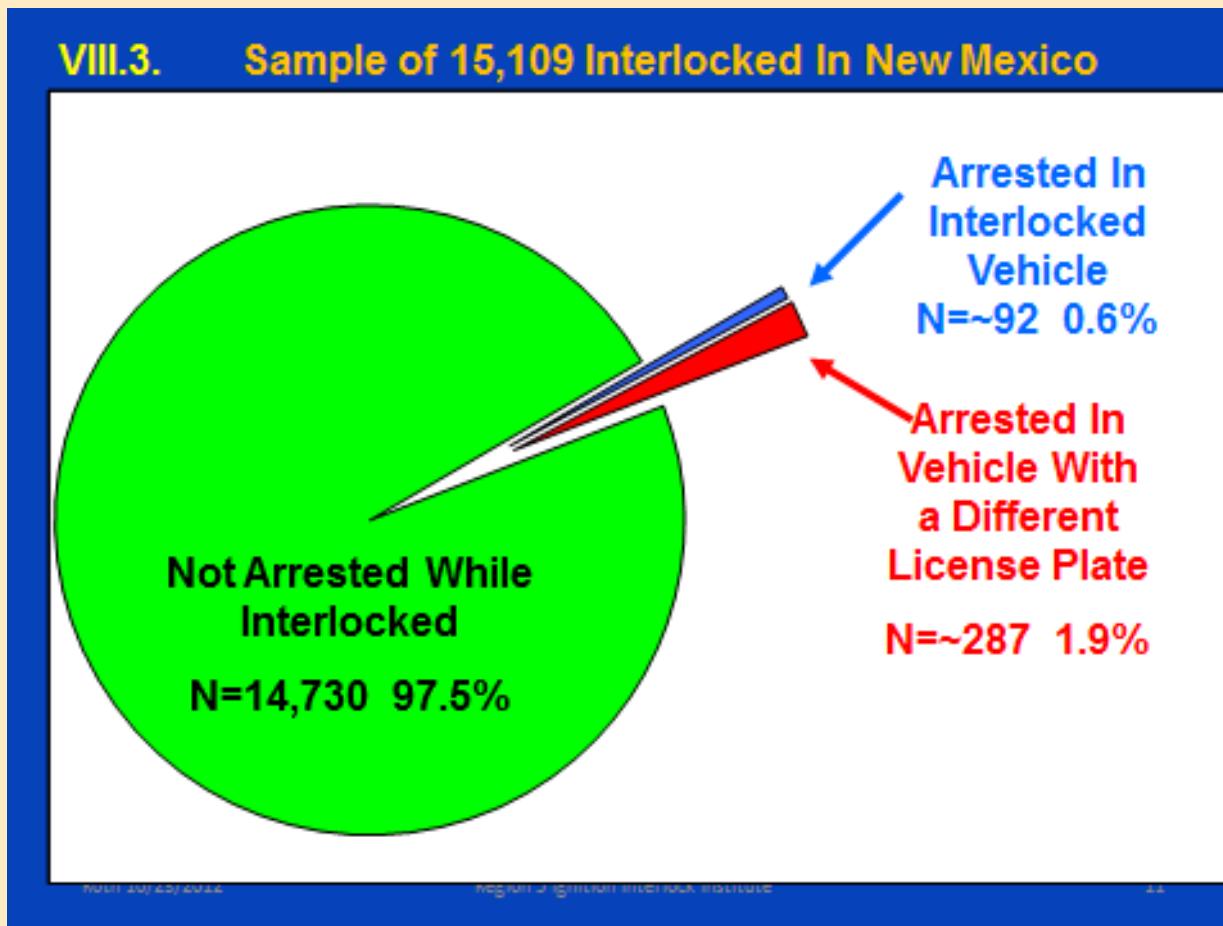
In this report an attempt is made to:

- Classify current USA interlock monitoring programs into 6 types;
- Assess the strength and limitations of each program type; and
- Suggest the impact of new technologies that are on the horizon.

1. Programs Based on Minimal Integrity Monitoring

- The interlock has strong deterrence system: *100% detection, swift & sure penalty.*
- Monitoring can be limited to insuring interlock is on the vehicle and functioning.
- Monitoring can be purely electronic and low cost.
- Limitation: *Use of non-interlock vehicle.*


DUI Arrests with Non-interlock Vehicle





What Lies Ahead?

- 1. System Integrity Monitoring:
New technologies will promote automation...
 - Real time reporting to monitors
 - Real time feedback to users
 - GPS location
 - NO-DRIV alternative system




2. Programs Based on Abstinence Monitoring

- Interlocks record circa 5 breath tests per day.
- DUI courts require abstinence as a condition of probation.
- Florida Motor Vehicle Department requires second offenders be abstinent as a condition of the interlock program.



2. Programs Based on Abstinence Monitoring (Cont.)

- Development of interlock units with photo ID capability provides the possibility of scheduled monitoring of drinking.
- Potentially increase interlock use for monitoring abstinence.
- Michigan court requires schedule morning and evening breath tests independent of driving.



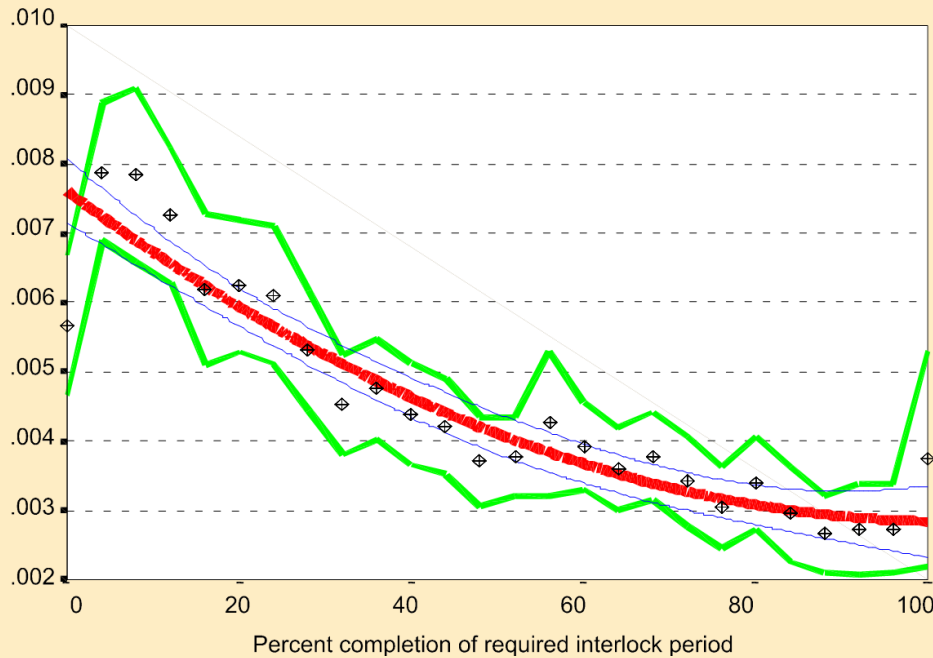
What Lies Ahead? (Cont.)

- 2. Abstinence Monitoring:
 - Will increase with growth of DUI courts and the integration of treatment...
 - Photo ID
 - Real time reporting

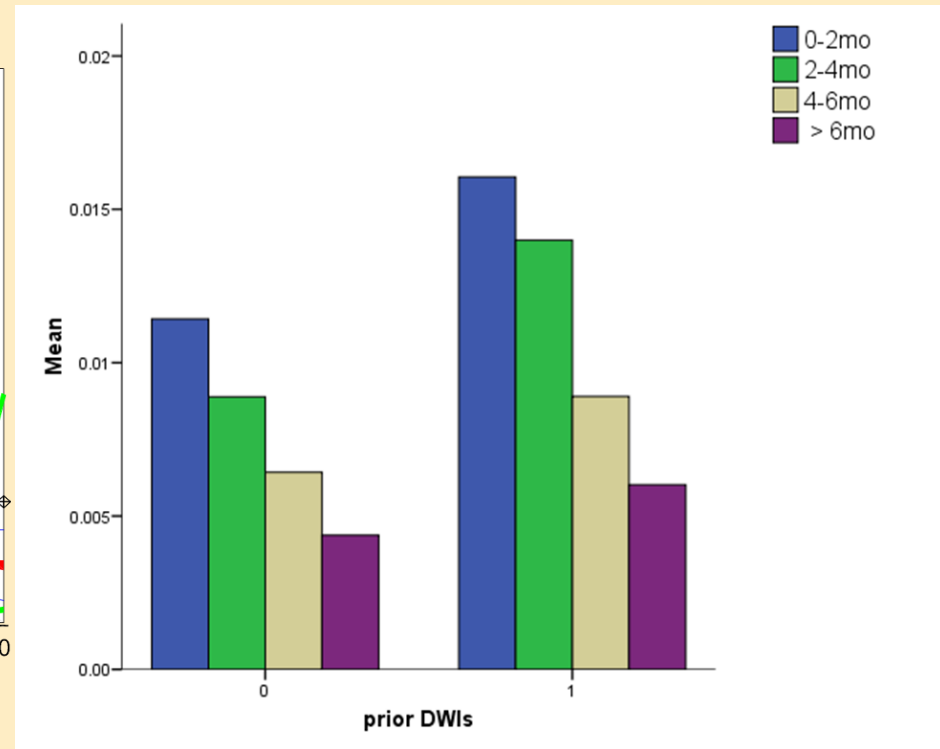
3. Programs Providing Intensified Feedback to Users

- DUI Offenders *learn* to avoid lockouts while on the interlock (Marques et al., 2010).
- There is evidence that detailed feedback on performance with rewards and sanctions speeds that process (Zador, et al., 2011).
- Extent of reduction in lock outs during time on interlock predicts recidivism following removal (Marques, et al., 2003).


While Interlocks Installed: Average Rate of Failed BAC Tests Decline by about Half



From Marques et al., (1999)
Addiction



From Marques et al., (2010)
Addiction



What Lies Ahead? (Cont.)

- 3. Programs providing feedback to users will expand to include educational materials based on interlock performance...
 - Real time reporting
 - Program APPs for automating message development and transmission
 - YFY communication with user



4. Programs with Provider Feedback

- Administering interlock programs have strained the limited staff available to some courts and the MVDs.
- An alternative is to move some elements of the monitoring to the interlock provider where the offenders' fees pay for the service.



What lies ahead?

- 4. The providers' role in monitoring and management of interlock offenders will expand...
 - Providers have the necessary technology
 - Providers have the technical staffs necessary to maintain and service the system




5. Programs with Integrated Treatment

- Failure of interlock to produce recidivism benefits following removal may be related to lack of treatment of the underlying problem.
- States in America are beginning to taking action to integrate treatment into interlock programs; Florida and Colorado are examples.



What lies ahead?

- 5. Programs with integrated treatment will increase as DUI courts expand and courses that exploit the potential therapeutic value of the interlock data are perfected.



On the Horizon

- Full impaired-driver control system with three alternatives for the offender:
 - Stop drinking (SCRAMTM).... or
 - Stop driving (NO-DRIV).... or
 - Interlock



Thank you for your attention!

Questions?

Contact:

Robert Voas at Voas@pire.org

