



WESTERN AUSTRALIAN
LOCAL GOVERNMENT ASSOCIATION



ROADWISE

The Yalgoo Experience



Ryan Gibson

TOWARDS ZERO



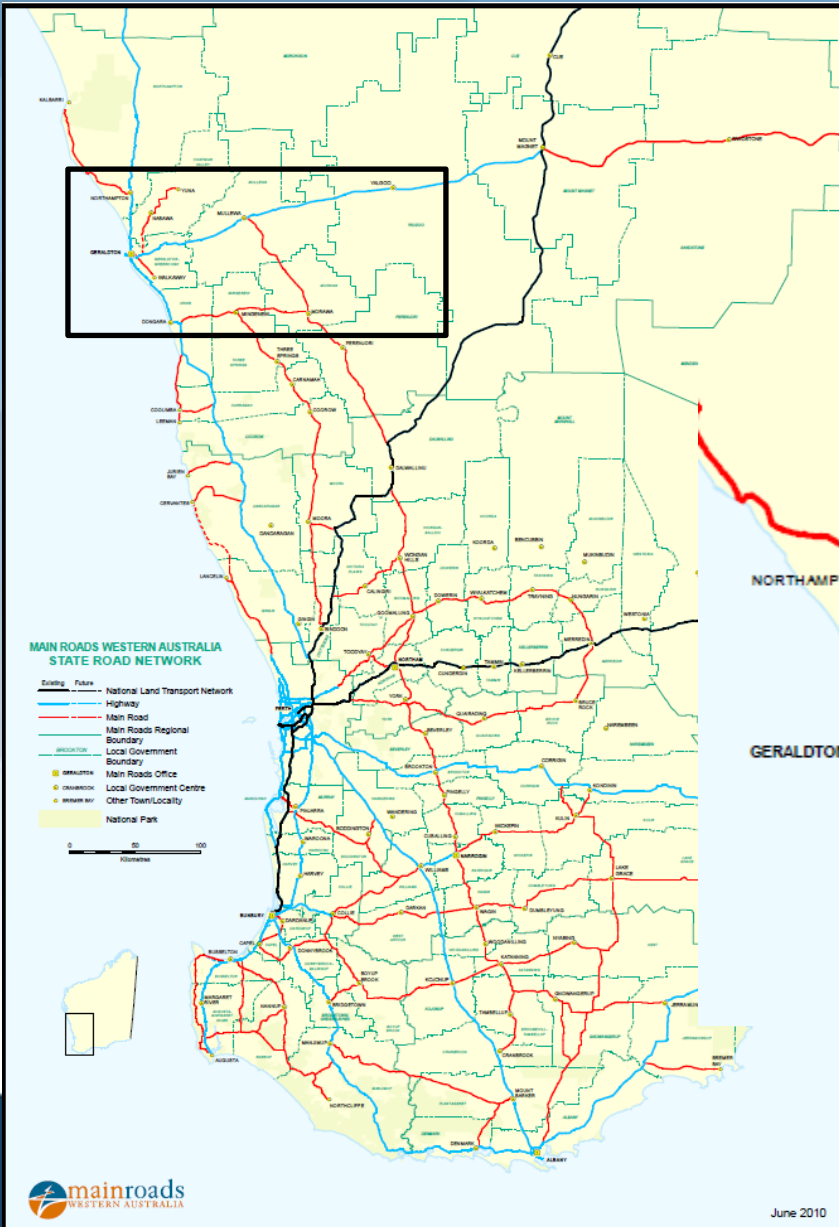
SPEED AND RED LIGHT
CAMERA FUNDED PROJECT

getting there together

Outline

- Yalgoo
- WALGA RoadWise Program
- Towards Zero
- Road Safety in the Mid West
- The OLA Process
- The Issue
- Outcomes
- What could have been done better

Where is Yalgoo?



Shire of Yalgoo

- Population of 242
- Covers an area of 33,528 km
- Responsible for 115km of sealed roads and 1,126 km of unsealed roads.
- One of 140 local governments in WA

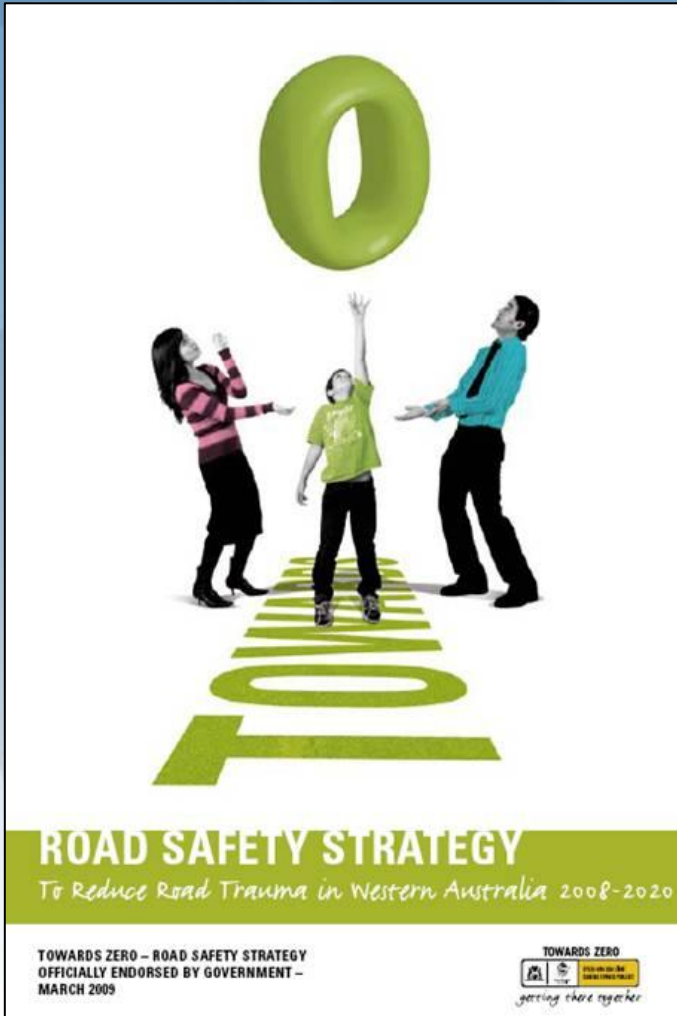
Road Safety and Local Governments in Western Australia

- Local Governments in WA are responsible for 72 per cent, or 128,147 km of the Western Australian road network
- Local government can directly influence Road Safety through their core business as:
 - A road authority
 - A planning authority
 - An employer and fleet operator
 - A Community Leader

The WALGA RoadWise Program

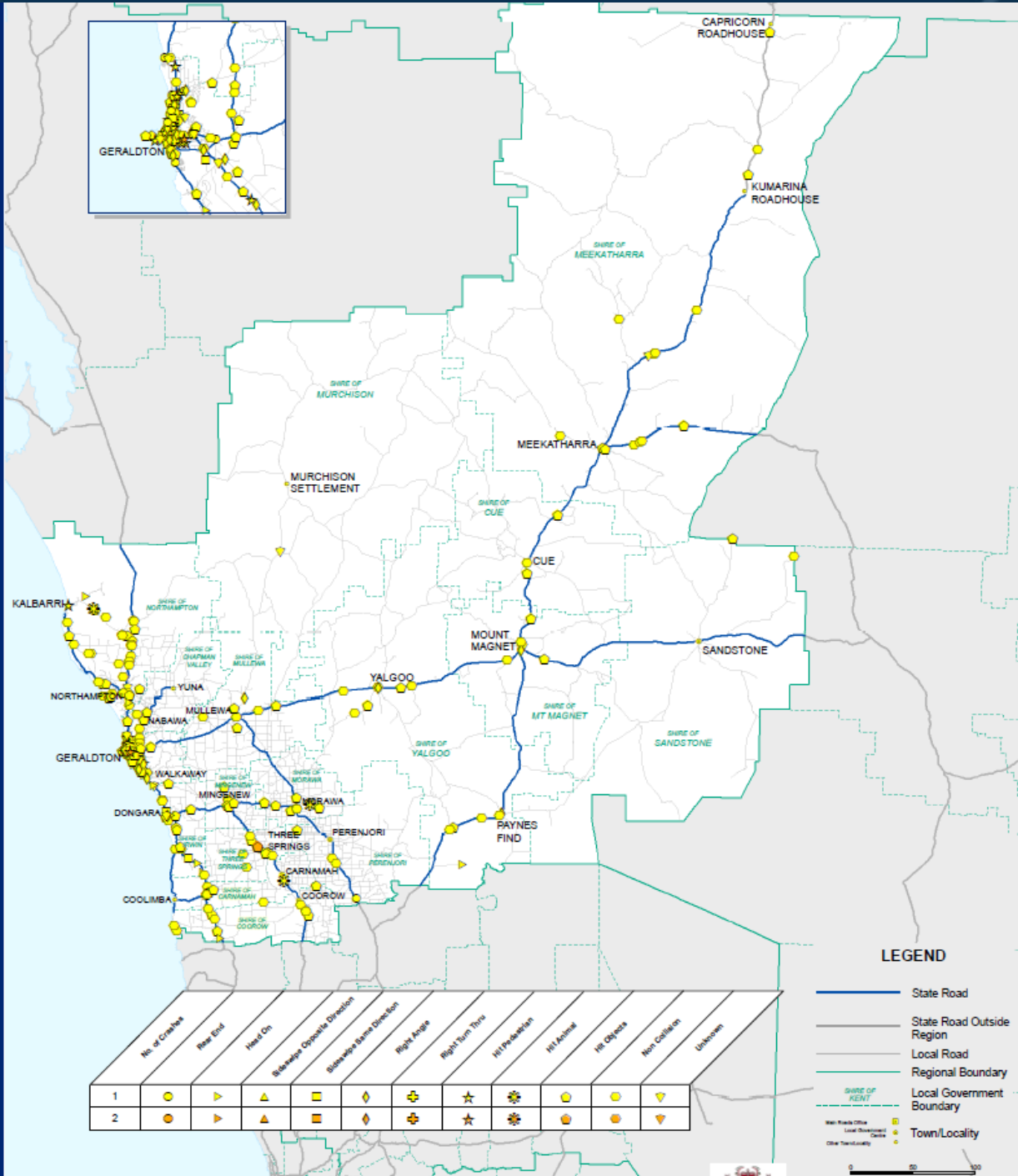
- In operation since 1994.
- Engage Local Governments and the community in effectively contributing to the adoption and application of the safe system approach and the implementation of specific initiatives of the *Towards Zero, Western Australian Road Safety Strategy 2008-2020*.
- The RoadWise Program is supported by the Road Safety Council of WA and funded through the Road Trauma Trust Account.

Towards Zero

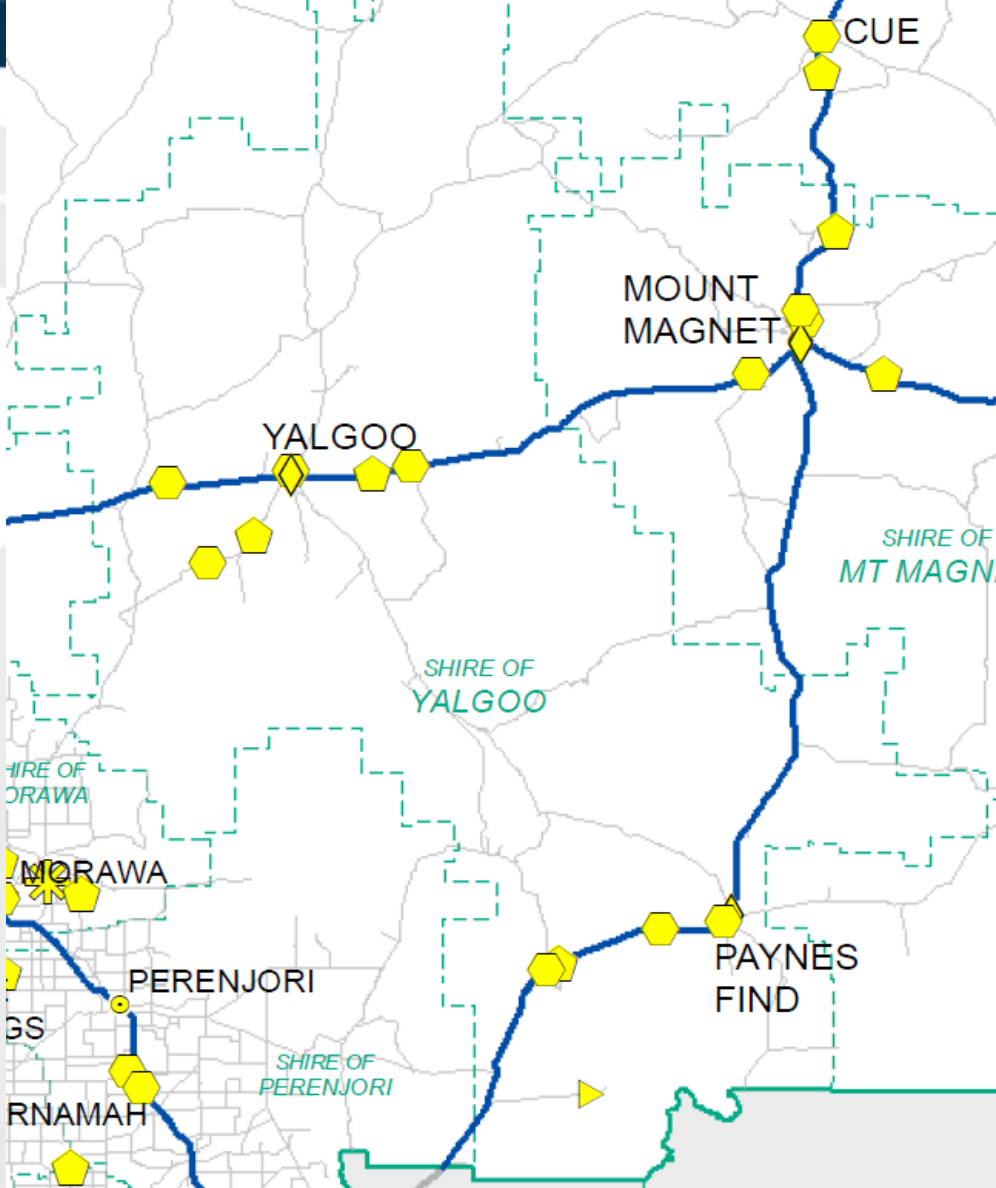


- *Towards Zero* – Getting There Together Road Safety Strategy 2008-2020
- *Towards Zero* means we do not accept that any human being should die or be seriously injured on our roads

Serious Crashes by Nature in the Midwest region



Serious Crashes by Nature in the Shire of Yalgoo

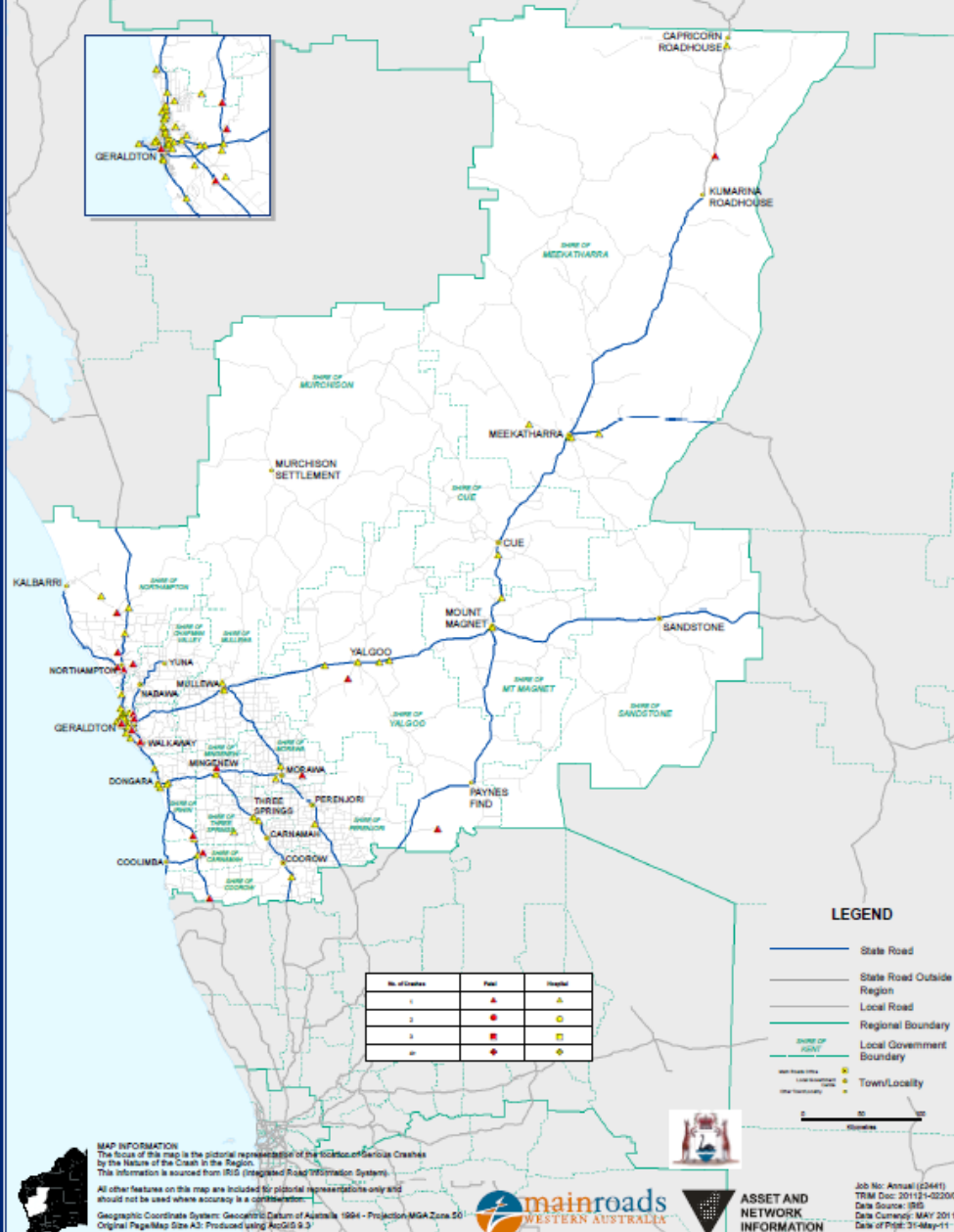


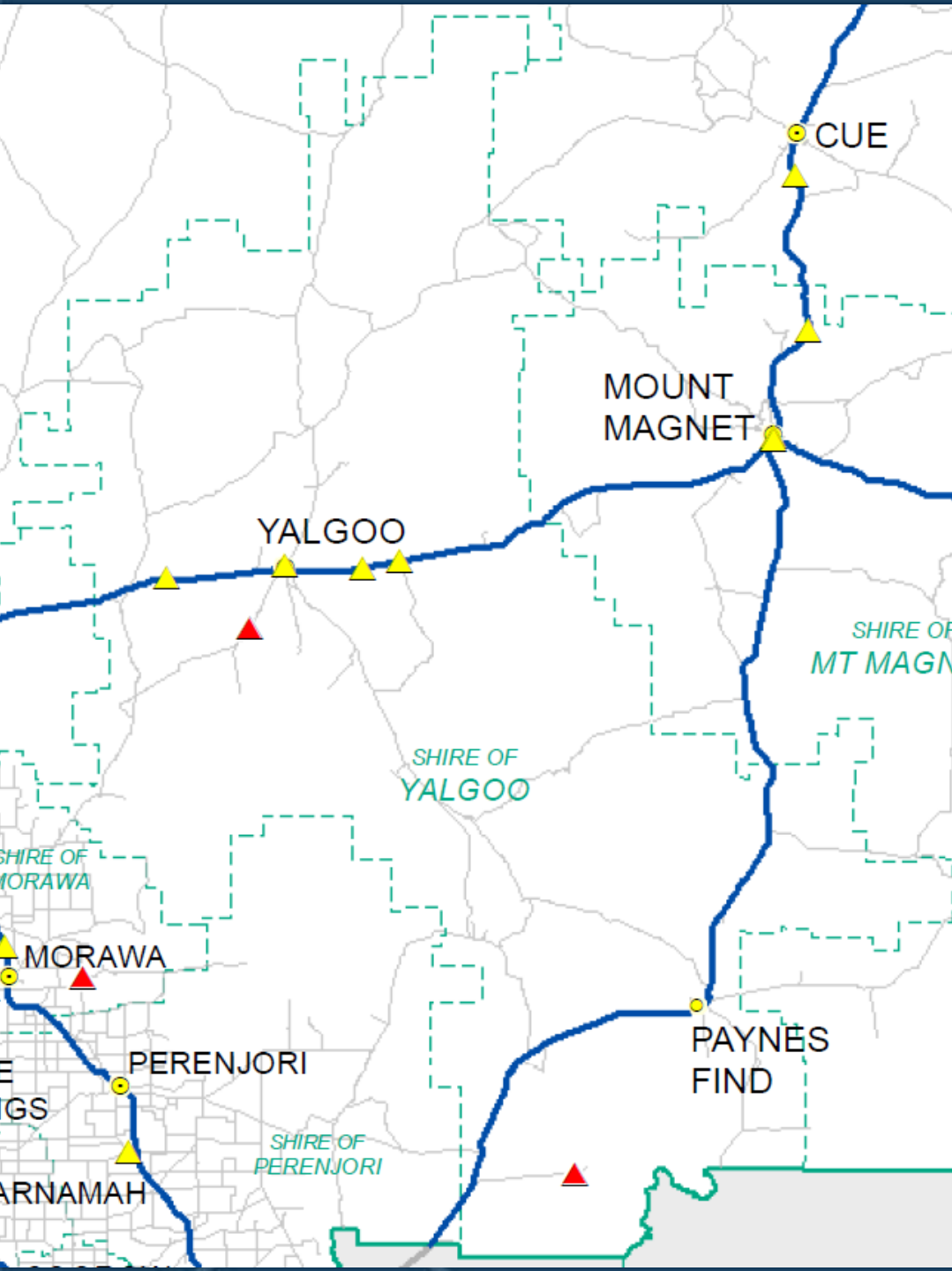
No. of Crashes	Head End	Head On	Sideways Opposite Direction	Sideways Same Direction	Right Angle	Right Turn Thru	Hit Pedestrian	Hit Animal	Hit Object	Non Collision	Unknown
1	●	▶	▲	■	◆	✦	★	☀	⬠	⬡	⬢
2	●	▶	▲	■	◆	✦	★	☀	⬠	⬡	⬢

Mid West Region SERIOUS CRASHES WHERE BEHAVIOUR WAS A FACTOR, 2006-2010



Serious Crashes Where Behaviour Was a Factor In the Midwest Region





Serious Crashes Where Behaviour Was a Factor in the Shire of Yalgoo

No. of Crashes	Fatal	Hospital
1	▲	▲
2	●	●
3	■	■
4+	+	+

The Issue

- Pedestrian Safety- Pedestrians crossing Geraldton Mount Magnet Road
 - Heavy Vehicle Route
 - Used by a number of Heavy haulage operators servicing mines to the east of Yalgoo
 - Controlled by Main Roads
 - Carries approx. 1500 vehicles a day
 - Approx. 20% Heavy vehicles
 - 80 km/h

The OLA Process

Under the OLA approach all parties are encouraged to provide *objective data* from their area of expertise, jointly work as a team to *list the opportunities* to overcome the concern, and then develop an *action, responsibilities and timeline plan* and implement to deliver the required road safety outcomes.

Actions from the Meeting

- Number of actions identified
- Actions divided into cornerstones and allocated to the responsible agency
- Actions prioritised in terms of when they can realistically be achieved

Actions from the meeting

Safe Roads and Road Sides

Audit Safety Signage on approaches to town	Complete
Double White lines on Geraldton Mount Magnet Road within the town boundary	Complete
Edge lining on Geraldton Mount Magnet Road	Complete
Install Rumble strips on approaches to town	Complete

Actions from the Meeting

Safe Roads and Roadsides

Apply for funding to introduce footpaths consistently in Yalgoo particularly main roads

Funding opportunities identified

Install pedestrian maze at intersection of Gibbons St and Geraldton Mount Magnet Road

Budgeted in Shire of Yalgoo forward capital works plan for 2011/2012

Install lighting and median strip as part of Gibbons Street Beautification Project

Added to Shire of Yalgoo forward capital works plan currently unbudgeted

Actions from the Meeting

Safe Speeds

Obtain speed display trailer

WALGA RoadWise program has provided information to shire of Yalgoo as well as assistance in completing the grant application

Monitor traffic speed

Police regular conduct traffic enforcement activities in and around Yalgoo

Events traffic management – reduced speed for events

As required

Actions from the Meeting

Safe Road Use	
Prepare & distribute a list of 24 hour contacts for haulage companies	Completed
Put road safety articles in Bulldust(Shire of Yalgoo newsletter)	Ongoing – articles included each month
Model safe behaviours such as using the footpath	Ongoing
Educate children about road safety	Ongoing –SDERA working with Yalgoo Primary School

The Outcome



Rumble Strips on the approach to the town of Yalgoo to slow approaching traffic and advised of Yalgoo town site



The Outcome



Children's cycling practise area opposite Yalgoo Primary School



What Did We Learn From The Process

- The Safe System approach can be applied to remote areas of WA
- Shared Responsibility is a key factor
- Community Participation is important for community ownership
- An action plan is need to provide clear guidance for all involved

What could have been done better?

- Presentation of objective data
- More community involvement
- Road safety audit before meeting
- Longer lead time before the meeting
- More organisations involved
- Consider safe vehicles cornerstone

What could have been done better?

- Speed reduction
 - Based on the safe system for possible conflicts between cars and unprotected road users the safe speed is 30km/h

Road type	Safe speed (km/hour)
Possible conflict between cars and unprotected users	30
Possible side-on conflict between cars	50
Possible frontal conflict between cars	70
No possible frontal or side-on conflict between road users	≥100

Table 1: Safe speed thresholds for different road types (Towards Zero 2008)

Thank You

I would like to thank Peta Vince who collaborated on the presentation and journal article, she is currently on maternity leave.

Also, the Yalgoo community and their commitment to road safety.

Further Information

Ryan Gibson

Regional Road Safety Officer (Metro south)

WALGA RoadWise Program

rgibson@walga.asn.au

Ph: 9213 2054

The background features a light blue gradient with abstract wavy lines on the left and a series of overlapping diamond shapes on the right. The text is centered in a black, sans-serif font.

Thank You

Any Questions?